



THE CREW

ANDREW MAYNARD ARCHITECTS

In 1996 Andrew Maynard received a Bachelor degree in Environment Design from the University of Tasmania and in 1998 he graduated with honours in a Bachelor of Architecture from the same University.

Between semesters in 1997 and 1998 Andrew worked for Allott Lovell Architects, Brisbane where he was involved in numerous innovative heritage projects. Following his graduation in 1998 he travelled throughout the United States and Europe. Upon return to Australia Andrew joined Woods Bagot Melbourne where he was involved in the design of numerous, large projects throughout Australia and South East Asia. In 2000 he joined Six Degrees Architects undertaking residential, hospitality and institutional projects.

In 2001 Andrew travelled throughout the United States, Europe and parts of Thailand. While in London he joined Charter Architects to work in the Richard Rogers Partnership on a collaborative urban design project.

Upon return to Melbourne in 2002 Andrew went into private practice undertaking commercial and residential projects as well as numerous large international design competitions. Andrew Maynard Architects has been published in journals such as the Architectural Record, Architectural Review (London), Monument, Houses, A+T (Spain), Architecture Australia, Wallpaper (London) and Po/Oxygen.

Andrew's conceptual and built work has been exhibited in New York, Budapest, Melbourne, Sydney, Osaka, Milan, Sao Paulo, Tokyo and more.

- WINNER, AIA ARCHITECTURE AWARDS, 2010
- WINNER, TREEHUGGER'S BEST OF GREEN, 2010
- WINNER, VISION AWARD, 2009
- WINNER, GUINS NEW YORK, 2004
- WINNER, ASIA-PACIFIC DESIGN AWARDS, 2002
- YOUNG DESIGN AWARDS, 2004

Andrew Maynard Architects was established in 2002 following Andrew's receipt of the grand prize in the Asia Pacific Design Awards for his Design Pod. The core principles in the establishment of AMA was a balance between built projects and broad political design studies. This is demonstrated in AMA's highly crafted built work and socio-politically based concepts, both of which have been widely published and have garnered global recognition.

Andrew Maynard Architects explores architecture of enthusiasm - AMA treats each project as a unique challenge, offering unique possibilities and prides itself in experimentation. All of AMA's designs are concept rich, left of centre and sustainability conscious; styles and singular themes are avoided. AMA specialises in ideas rather than building type, whether the project be a house in Fitzroy, a library in Japan, a protest shelter in Tasmania, a plywood bicycle or a suburb eating robot.



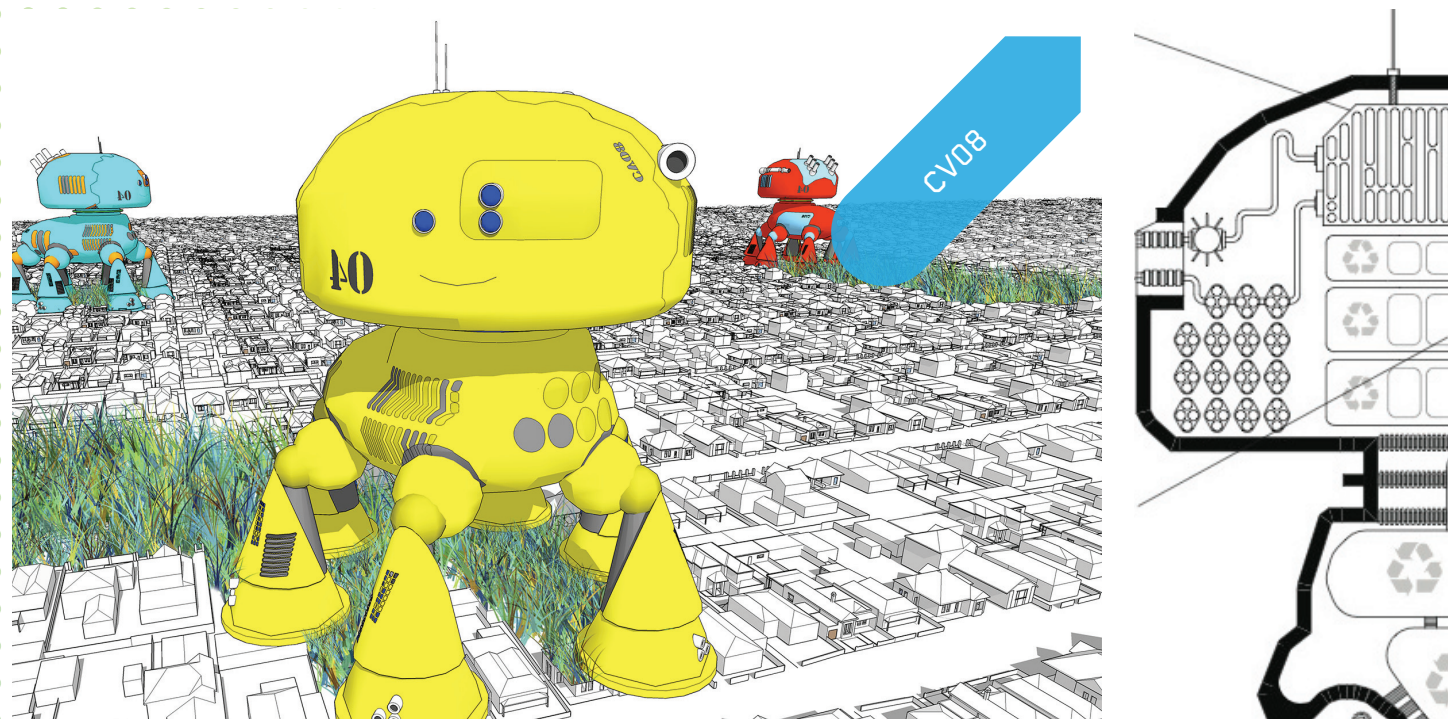
More frequently holiday homes are becoming little more than transplanted suburban ugliness: the great Australian tradition of the 'shack' is in danger of being superseded by blasted mansions with four bathrooms and all the trappings of modern life. With this project we wanted to celebrate the shack and have kept close to the original building's footprint to avoid taking over the rugged coastal block. Our clients came to us with a brief for 'much more room' for their ageing family holiday home. Our response was a series of finely-crafted timber boxes nestled around the bulk of the existing house. The bedroom addition opens up the northern facade of the house to the rugged bush block, doing double duty as the roof becomes an expansive deck to extend the living space out into the treetops. Other additions include extra storage space and a glass-ceiling shower for more of those precious tree-top views.



The Vader House is an extension to a Victorian terrace in the dense inner-city. The high boundary walls, built above existing height regulations long before such rules were created, permitted a non-standard height along the northern boundary. The rooftop then abruptly turns to follow the dictated setback lines, resulting in a playful and telling interpretation of planning rules. All the new works surround an outdoor courtyard space which becomes the new centre of the house, accessed by a series of glass doors it is the 'opposite' of the dark masonry-clad rooms of the old house. The refined palette of materials is subverted where volumes are removed to reveal the flesh inside - coloured bright red with glass tiles and joinery.



An extension to an existing three bedroom house in Fitzroy North to provide new living and kitchen space to a growing young family. Many of the design decisions were generated by the tight budget. The form is a simple box - the strongest form an architect can achieve at a bargain basement price. Council requirements regarding overlooking which dictate a 75% opacity to second-storey spaces are resolved by UV stable stickers rather than expensive and elaborate screening. The tree supergraphic creates playful and ever-changing shadows across the interior spaces and is composed of images taken in the local park. Despite these challenges a double story, non-domestic scale space was achieved with a basic palette of materials.



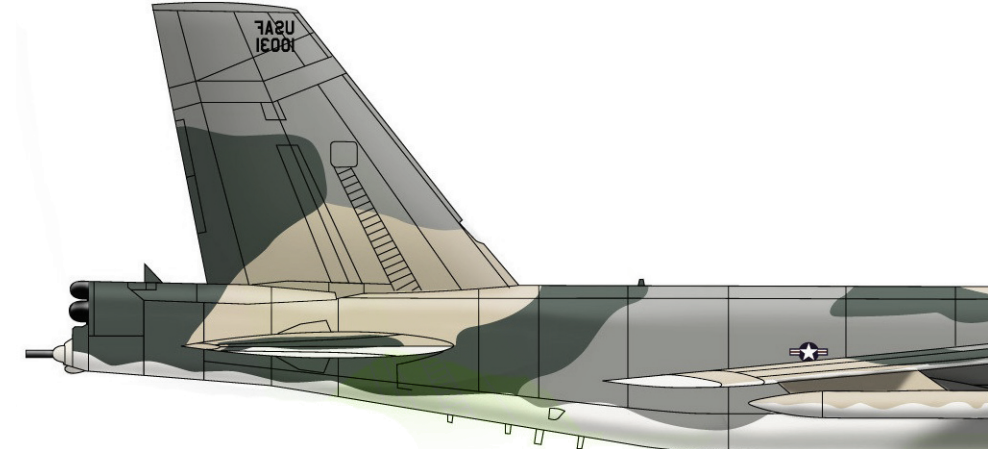
The Australian suburb was born out of our dependence on the car. With Peak Oil rapidly approaching, the epoch of the automobile with soon come to an end and so will the Australian suburb. CV08 is a robot - designed to consume the abandoned suburbs through its front two legs. It processes the materials and fires off compacted recycling missiles to awaiting recycling plants. CV08's middle legs and one rear leg follow the front legs to terraform the newly revealed earth with native Flora and Fauna. Vast stocks of the Flora and Fauna are stored within CV08 in carbonite sleep until they are required to colonise what was previously suburban wasteland.



The Styx Valley Forest is a pristine wilderness in south-western Tasmania, Australia. It is home to the tallest hardwood trees in the world averaging around 80-90 metres, many of which are over 400 years old. Unfortunately the Styx Valley falls just outside the protection zone and is now under attack from logging companies.

"One of Melbourne's most talked about and creative architectural firms" Po/Oxygen

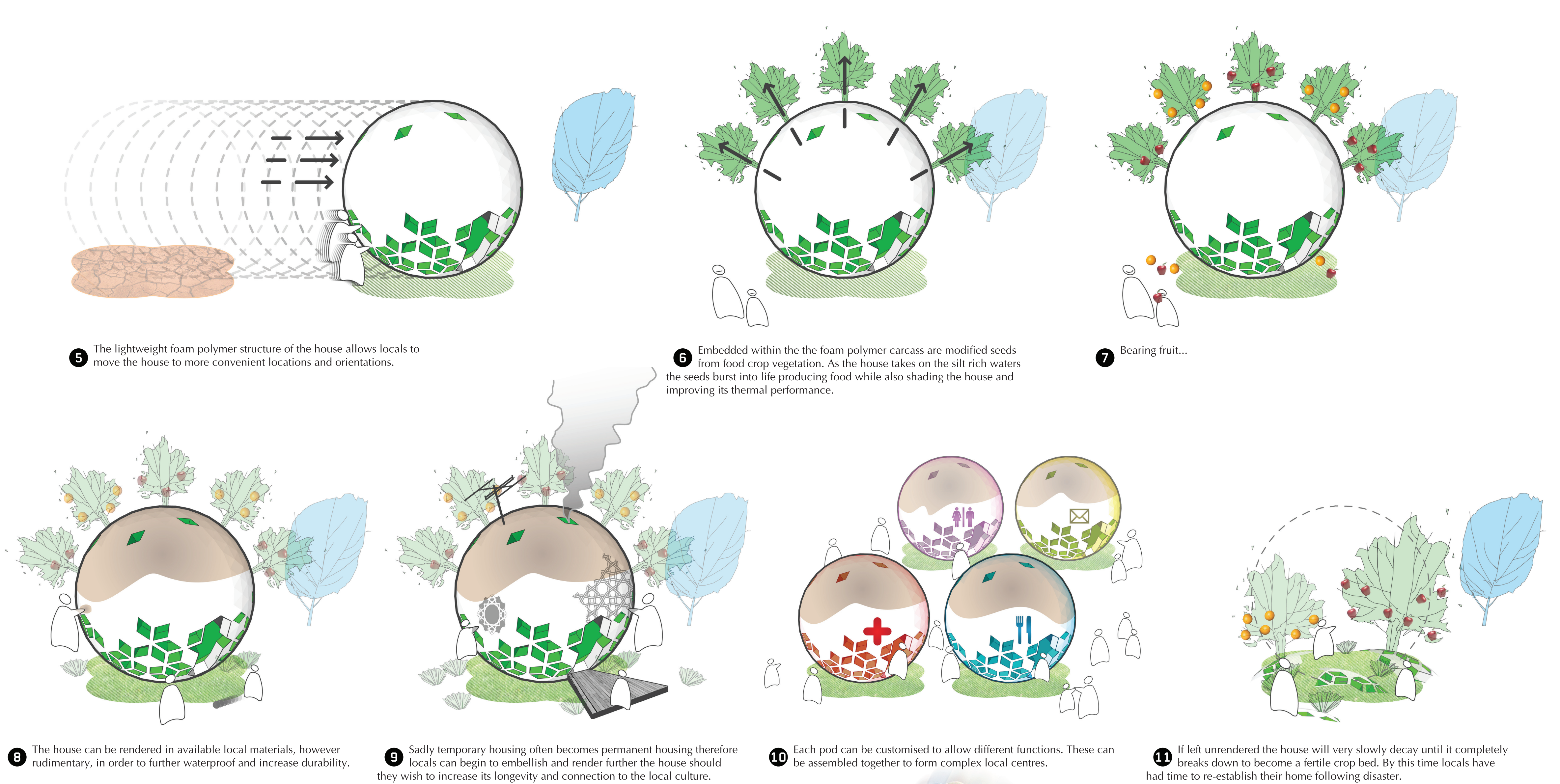
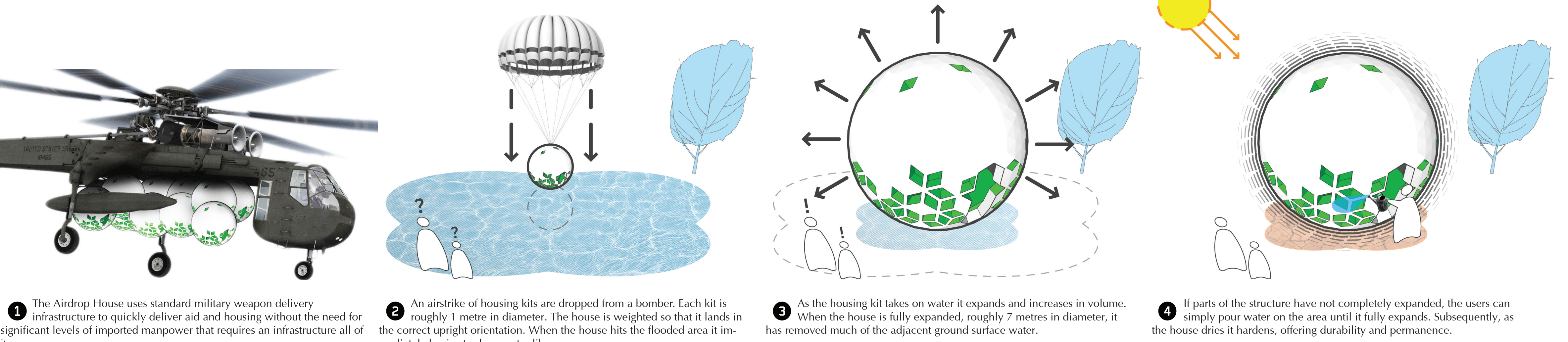
THE AIRDROP HOUSE



The Airdrop House en-route to a flood effected area.



A bomber drops housing kits throughout the flood effected area.



STUPID SOLUTIONS TO SERIOUS PROBLEMS
AMA